



CREAMS

CREAMS ORGANIZATION PROFILE

Anderson Building
P.O Box 31045
Area 43, Lilongwe
Malawi

Phone: +265 999 295 053
: +265 992 744 497
E-mail: info@creamsmw.com

**MARCH 22,
2025**

www.creamsmw.com

TABLE OF CONTENTS

1. Contact Details.....	3
2. About Clinical Research Education and Management Services, CREAMS, Malawi	4
3. Mission Statement.....	5
4. Vision.....	5
5. Values and Principles.....	5
6. Main Activities of the Organisation.....	6
6.1 Research Conduct.	6
6.2 Capacity Strengthening for Researchers and Policymakers	6
6.3 Research Partnerships.....	6
6.4 Training.....	7
6.5 IT, Software Development and Data Analytics.....	7
6.6 Knowledge Translation.....	7
7. Sources of Funding	7
8. Collaborating Partners	7 –8
9. Organisation Size and Management Structure.....	8
10. CREAMS' Gender Equality Policy	9
11. CREAMS' Personal Data Policy	9
12. CREAMS' Previous and Current Projects.....	10
12.1 Research Grants.....	10
12.2 Conference Organisation.....	11
12.3 Previous and ongoing Training Activities.....	11
13. Research Outputs through Publications from Our Team.....	12, 13-14
14. Other Outputs since 2012.....	15-16



1. Contact Details

Name of Organisation:	Clinical Research Education and Management Services
Address:	Anderson House, Area 43 P.O Box 31045, Lilongwe, Malawi
Key/Contact person:	Cynthia Chitule Email: cchitule@creamsmw.com
Back-up contact person:	Adriano Lubanga Email: Adriano.lubanga@creamsmw.com
Telephone:	+265 992 744 497 / +265 999 295 053
E-mail:	info@creamsmw.com
Website/Facebook page/Other social media:	Website: www.creamsmw.com LinkedIn https://www.linkedin.com/company/clinical-research-education-and-management-services-creams/

2. About Clinical Research Education and Management Services, CREAMS, Malawi

Clinical Research Education and Management Services, otherwise abbreviated as “CREAMS” is a Malawi-based non-profit health research and training organization dedicated to advancing evidence-based policymaking through the conduct of high-quality research, capacity building, and policy engagement. Since its inception in 2011, CREAMS has played a pivotal role in generating research-driven insights to inform public health, capacity development, and socio-economic policies in Malawi and beyond.

CREAMS’ multidisciplinary team of researchers, policy analysts, and development practitioners has extensive experience in networking, conducting applied research and fostering policy dialogue. Our team collaborates with government agencies, academic institutions, and international organizations to address key research gaps, policy challenges, particularly in health systems strengthening, capacity building, climate change related health phenomena, gender equality, and economic resilience of health programmes.

Our core strategic objectives include:

- 1. Generating Policy-Relevant Research** – Conducting rigorous research to provide evidence-based solutions in public health, climate adaptation, and socio-economic development.
- 2. Building Research Capacity** – Strengthening the skills of local researchers and institutions through training, mentorship, and collaborative research initiatives
- 3. Enhancing Policy Engagement** – Bridging the gap between research and policymaking by engaging stakeholders in evidence-informed decision-making processes
- 4. Promoting Data-Driven Decision-Making** – Providing timely and credible data to inform national and regional development strategies
- 5. Fostering Multi-Sectoral Partnerships** – Collaborating with governments, civil society, and international agencies to drive impactful policy interventions.

Through these efforts, CREAMS contributes to shaping policies on health financing, antimicrobial resistance and infection control, reproductive health, climate resilience, and human and institutional development in Malawi.

Our work aligns with national priorities and international frameworks such as the Health Strategic action Plan of Malawi, Africa Union Agenda 2063, and Sustainable Development Goals (SDGs) by ensuring that its research contributions translate into meaningful policy action.



3. Mission Statement

Our mission is to bridge gaps in networking, capacity building, policy dialogue, research conduct, health research information flow and training in low-resource countries, starting from Malawi.

4. Vision Statement

CREAMS' vision is to create an enabling environment where researchers, policy makers, youth and development practitioners develop and deploy their skills to conduct high quality research that translate into impactful policies for public health development in Malawi and other similar settings in low- and middle-income countries (LMICs).

5. Values and Principles:

CREAMS day-to-day work is shaped based on the following values:

1. **Collaboration:** We believe in growing together as such we work with partners to build strong research network systems.
2. **Resilience and hard work:** We are commitment to what we do.
3. **Timeliness:** We deliver timely.
4. **Proactiveness:** We are always a step ahead when it comes to research development.
5. **Innovativeness:** We build new solutions and find innovative ways of doing things.
6. **Accountability:** We are accountable for what we do

6. Main Activities of the Organisation

CREAMS is committed to strengthening networking, capacity building especially of young scientists and young institutions, conduct of research and sharpening evidence-informed policymaking (EIP) in Malawi and similar settings by timely bridging the gap between research

and policy implementation. Our activities are shaped by our strategic objectives and they include:

6.1 Research Conduct.

CREAMS specializes in both clinical and applied research activities.

Our research activities revolve around the following areas.

- Clinical research and clinical trials
- Operational research
- Health systems research
- Social science research
- Laboratory research
- Pharmaceutical research
- Ethics and health law research
- One health and climate change research
- Capacity Development research
- Health economics research
- Mental health research

6.2 Capacity Strengthening for Researchers and Policymakers.

Capacity building remains a key activity to us. We support upcoming researchers and policy makers through trainings, mentorship, and peer learning activities. Simultaneously, we contribute to building the capacity of policymakers by providing them with relevant and actionable research insights.

We run various programs aimed at fostering research development in LMICs including:

- Early career grant support schemes
- Research and Development Fellowship Programme
- CREAMS Associate Membership Scheme
- Research training (both virtually and physically)

6.3 Research Partnerships.

Through our advanced network systems, we foster south-south collaborations as well as North South Collaboration for meaningful research developments. Annually CREAMS hosts 10 to 15 internal young science students interested in global health experience

6.4 Training.

CREAMS offers advanced training in research conduct, data analytics and the use of advanced technologies in research.

We both offer in-person and virtual training in areas including:

- Grant writing
- Manuscript writing and publication
- Implementation research methodologies
- Good Clinical Practice (GCP)
- Research Methods including research ethics
- Developing a career in research and the importance of developing personal development goals
- Policy engagement
- Building institutional research capacity
- Data analytics.

6.5 IT, Software Development and Data Analytics.

CREAMS and its partners specialize in modern technology for research conduct, improving health service delivery and data analytics. We have teams that specialize in internet of things, big data, AI etc. to improve service delivery and modernize conduct of research in hard-to each areas.

6.6 Knowledge Translation

As part of closing the gap between research and practice, CREAMS hosts and co-hosts conferences with various organs of the Ministry of Health in Malawi, non-governmental organisation and other stakeholders.

This provides a platform where our researchers can present their findings for training, skills development and policy adoption.

7. Sources of Funding

CREAMS' sources of funding include:

- Research grants
- Membership activities
- Donations
- Director's Contributions.

8. Collaborating Partners

CREAMS collaborates with various partners in Malawi and internationally including:

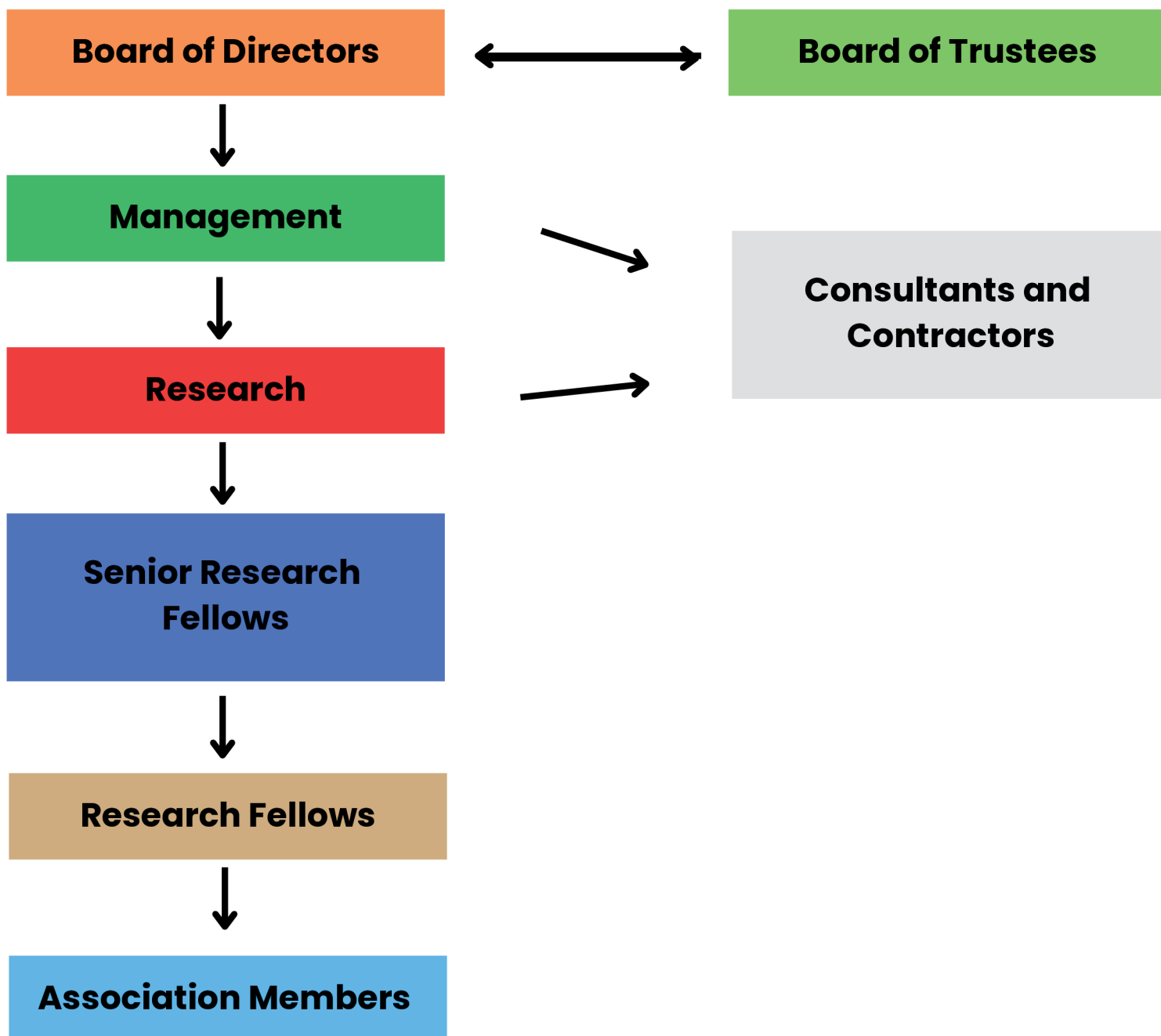
- Ministry of Health of Malawi through the Public Health Institute of Malawi
- University of Malawi, Department of Economics
- Malawi University of Science and technology (MUST) through the Academy of Medical Sciences
- Life Health global
- Optimum Systems

- Nexleaf Analytics
- Kamuzu Central Hospital
- Youth with Talents, USA
- Christian Hospitals Association of Malawi hospitals (St Gabriel Hospital and Likuni Hospital).

9. Organisation Size and Management Structure

The organisation consists of up to 20 full time members and about 100 associate members distributed across various geographical areas of Malawi and internationally.

Our management structure is as follows:



10. CREAMS' Gender Equality Policy

The CREAMS' Gender Equality Policy (CGEP) is a framework designed to eliminate gender based discrimination and bias, promoting fairness, respect, and equal treatment for all genders in all aspects of employment.

This policy applies to all employees, contractors, and individuals associated with CREAMS, ensuring that gender equality is embedded in recruitment, compensation, career development, and workplace culture.

Key actions include:

- Implementing gender-neutral language in job descriptions.
- Providing training on unconscious bias and harassment prevention.
- Ensuring equal pay for equal work and transparent career advancement.

11. CREAMS' Personal Data Policy

CREAMS complies with the General Data Protection Regulation in the Republic of Malawi, which comprises Protection of Personal Information.

We abide by this policy when depositing personal information in CREAMS databases that enables us to:

- Create a list of contacts under special programmes such as CREAMS Association, Affiliates, Collaborators and staff members
- Distribute our press releases to intended recipients in the databases
- Send invitations to our events
- Send scientific reviews
- Send invitations to webinars

The personal data collected includes: first name, surname, e-mail address(es), telephone number(s), position(s) and structure(s).

The data is kept for 5 years and then deleted after this period. If the e-mail address has not been used after a certain period, it will be deleted before the stated retention period.

We take all necessary steps to ensure the confidentiality and security of our members' data, to prevent access by unauthorized third parties. This means that CREAMS cannot share members' personal information without their prior approval.

Members are free to exercise their rights of access, rectification, opposition, limitation or deletion of their personal information by sending a request to by clicking on the links below or by sending your request to the e-mail address: info@creamsmw.com

12. CREAMS' Previous and Current Projects

12.1 Research Grants

Project Title	Collaborating Institutions	Funding Body	Project Location & Duration	Year	Overall Budget
Rationalizing Antibiotic Use for the Treatment of Bloodstream and Urinary Tract Infections in Public Health Facilities in Malawi	Malawi Ministry of health, Antimicrobial Resistance National Coordinating Centre	Pfizer Inc	Malawi, 18 Months	2024	99,000 dollars
Malawi Early Infant Nutrition optimization trial Project MEINO (CREAMS-Orant Charities Africa)	Orant Charities Africa, Kasese Health Centre	Rosario Armond Ugon_Barcelona	18 Months (up to 2026) Malawi	2024-2026	20,000 Euros
Evaluation of the impact of Rapid repair and maintenance (R3) of Vaccine Cold chain implementation in Malawi (CREAMS-UNIMA)	Nexleaf Analytics	Gavi-Through Nexleaf Analytics	9 Months Malawi	2025	50,000 Dollars
Toward a typhoid Free community; An Evaluation of Public Knowledge, Attitude and Prevention practices relating to typhoid disease in high risk urban and peri-urban areas of Lilongwe, Malawi. (CREAMS)	n/a	RSTMH	1 year Malawi	2024-2025	4800 GBP
Assessment of the impact of snakebite envenoming and dog bites on rural livelihood in Malawi. A cross-sectional community- (CREAMS)	Benno Kreuels (Bernhard Nocht institute of tropical medicine, Germany)	RSTMH	1 year Malawi	2024-2025	4800 GBP

12.2 Conference Organisation

Conference Name	Year	Role
Kamuzu Central Hospital Research and Dissemination Conference	2024	Co-Organising Partner
Malawi National Research Dissemination Conference	August, 2025	Co-host

12.3 Previous and ongoing Training Activities

Training Title	Year	Co-Organising partner	Beneficiaries	Trained	Budget
Youth with Talents Global Health workshops	2017-2024	Youth with talents, USA	Science Students from US and Malawi	More than 100 youths since 2017	50,000 Dollars per year
Good Clinical Practice (GCP)	2023 October	LT Clinical Research South Africa	Researchers from partner institutions in Lilongwe, including Kamuzu Central Hospital	15 researchers	3000 Dollars
Introduction to Research, Grant Writing, Research Methodologies	Monthly Online trainings	CREAMS	Associate Members		More than 20 researchers trained

13. Research Outputs through Publications from Our Team

1. Lubanga AF, Kafera G, Bwanali AN, Choi Y, Lee C, Ham E, Lee JY, Chung J and Chung J (2025) **Embracing change, moving with time: exploring the role of digital technologies and accelerators in promoting community oral health in Africa.** *Front. Oral Health* 6:1443313. doi: 10.3389/froh.2025.1443313
2. Kapatsa T, Lubanga AF, Bwanali AN, Harawa G, Mudenda S, Chipewa PC, Kamayani M, Makole TJ, Ali AY, Mohamed AA, Tae Youn K, Kim L, Daniel WD, Kim M, Chehab TE, Nyirenda T. **Behavioral and Socio-Economic Determinants of Antimicrobial Resistance in Sub-Saharan Africa: A Systematic Review.** *Infect Drug Resist.* 2025 Feb 13; 18:855–873. doi:10.2147/IDR.S503730. PMID: 39963371; PMCID: PMC1183191
3. Mudenda, S. , Simbaya, R. , Moonga, G. , Mwaba, F. , Zulu, M. , Tembo, R. , Chiyangi, H. , Vlahakis, P. , Mohamed, S. , Lubanga, A. , Kanaan, M. , Kasanga, M. , Muzondo, N. , Mugenyi, N. and Mufwambi, W. (2025) **Surveillance of Antibiotic Use and Adherence to the WHO/INRUD Core Prescribing Indicators at a Primary Healthcare Hospital in Southern Zambia: Opportunities for Antimicrobial Stewardship Programs.** *Pharmacology & Pharmacy*, 16, 1–19. doi: 10.4236/pp.2025.161001.
4. Bwanali AN, Liundi P, Lubanga AF, Mpinganjira SL, Gadama LA. Caregiver acceptance of human papillomavirus vaccine for their female children in Chileka, Blantyre, Malawi. *Vaccine X.* 2024 Sep 18; 20:100557. doi: 10.1016/j.jvacx.2024.100557. PMID: 39381544; PMCID: PMC11458542.
5. Lubanga AF, Khuluza C, Muhyuddin J, Simfukwe R, Kaphesi F, Yeum YH, Yoon JJ, Kim C, Kim S, Kim SY, Lee JA, Park J, Kim D, Bwanali AN, Woohyung L and Nyirenda T (2024) **A retrospective review of the common childhood illnesses and the indications for antibiotic prescription at community hospital in Malawi.** *Front. Antibiot.* 3:1447435. doi:10.3389/frabi.2024.1447435
6. Bwanali, A.N., Munthali, L., Napolo, U. *et al.* **Clinical audit of cases and outcomes of patients admitted to the intensive care unit at Kamuzu Central Hospital, Lilongwe, Malawi.** *Sci Rep* 14, 19019 (2024). <https://doi.org/10.1038/s41598-024-66810-7>
7. Katundu KGH, Mukhula V, Matemvu Z, Mtonga AJ, Kasanda-Ndambo M, Lubanga AF, Malenje MG, Nyangulu W, Momba G, Triulzi I, Kalanga N, Mipando M, Nyondo-Mipando AL, Hosseinipour MC. **Barriers and facilitators to integration of screening for hypertension, diabetes mellitus and dyslipidemia, among adult people living with HIV at district hospital ART clinics in Southern Malawi.** *Res Sq [Preprint].* 2024 Dec 9: rs.3.rs-5373585. doi:10.21203/rs.3.rs-5373585/v1. PMID: 39711555; PMCID: PMC11661355.
8. Lubanga AF, Bwanali AN, Kamanga W, Kathewera BS, Makole TJ, Mpinganjira SL, Mudenda S, Mitambo C, Cho Y, Yeum D, Chung JS, Park J, Nyirenda T. **Antibiotic Dispensing Practices Among Community Retail Pharmacies and Registered Drugstores: Results from a Simulated Client Study in Lilongwe, Malawi.** *Integr Pharm Res Pract.* 2024 Nov 28; 13:229–242. doi: 10.2147/IPRP.S487530. PMID: 39628834; PMCID: PMC11611745.

9. Lubanga AF, Bwanali AN, Kangoma M, Matola Y, Moyo C, Kaonga B, Ssebibusbu S, Makole TJ, Kambili F, Chumbi GD, Munthali L, Mwale A, Kaphesi F, Simfukwe R, Mphepo M, Kapatsa T, Harawa G, Mpinganjira SL. **Addressing the re-emergence and resurgence of vaccine-preventable diseases in Africa: A health equity perspective.** *Hum Vaccin Immunother.* 2024 Dec 31;20(1):2375081. doi: 10.1080/21645515.2024.2375081. Epub 2024 Jul 9. PMID: 38982713; PMCID: PMC11238914.
10. Lubanga AF, Bwanali AN, Kambiri F, Harawa G, Mudenda S, Mpinganjira SL, Singano N, Makole T, Kapatsa T, Kamayani M, Ssebibusbu S. **Tackling antimicrobial resistance in sub-Saharan Africa: challenges and opportunities for implementing the new people centred WHO guidelines.** *Expert Rev Anti Infect Ther.* 2024 Jun;22(6):379–386. doi: 10.1080/14787210.2024.2362270. Epub 2024 Jun 3. PMID: 38809689.
11. Adriano Focus Lubanga; Akim Nelson Bwanali; Chitemwa Moyo; Gertrude Diana Chumbi; Yankho Mike Matola; Hyunwook Nam; Lorie Kim; Jooheon Park; Jonathan Chung. **Beyond RTS, S malaria vaccine piloting to adoption and historic introduction in sub-Saharan Africa: a new hope in the fight against the vector-borne disease,** *Frontiers in Tropical Diseases*, <https://www.frontiersin.org/journals/tropical-diseases/articles/10.3389/fitd.2024.1387078>
12. Lubanga AF, Bwanali AN, Munthali LE, Mphepo M, Chumbi GD, Kangoma M, Matola Y, Kaonga B, Moyo CS. **Exploring the Role of Community Involvement in Reducing the Burden of Schistosomiasis and Other Neglected Tropical Diseases in Malawi: Where are We in the Fight Against Neglected Tropical Diseases?** *Res Rep Trop Med.* 2024 Feb 28; 15:51–58. doi: 10.2147/RRTM.S448425. PMID: 38435085; PMCID: PMC10909323.
13. Lubanga, Adriano F. MD; Bwanali, Akim N. MBBS, Munthali, Leonard MBBS; Chumbi, Gertrude D. MBBS; Mphepo, Mzati MBBS. **What should be Malawi’s goal in cholera control and prevention? Lessons from the deadliest cholera outbreak in two decades.** *International Journal of Surgery: Global Health* 6(5): e0300, September 2023. | DOI: 10.1097/GH9.0000000000000300
14. Lubanga AF, Lee JA, Nam H, Kim J, Whang S, et al. (2024) **Characteristics of Patients Diagnosed with Tuberculosis in a Rural District of Malawi: A Retrospective Analysis of Secondary Data.** *J Clin Res Med* Volume 7(1): 1–4.
15. Kangoma, Melina MD; Lubanga, Focus A. MD; Bwanali, Akim N. MD. **Mental health impact of the 2023 Tropical Cyclone Freddy and Southern region mudslides on Malawian women: the neglected humanitarian crisis.** *International Journal of Surgery: Global Health* 6(5): e0306, September 2023. | DOI: 10.1097/GH9.0000000000000306
16. Bwanali, Akim Nelson MBBS; Lubanga, Adriano Focus MBBS Mphepo, Mzati MBBS; Munthali, Leonard MBBS; Chumbi, Gertrude Diana MBBS; Kangoma, Melina MBBS. **Vaccine hesitancy in Malawi: a threat to already made health gains.** *Annals of Medicine & Surgery* ():10.1097/MS9.0000000000001198, August 17, 2023. | DOI: 10.1097/MS9.0000000000001198

17. Lubanga A and Bwanali AN. **Multi-drug-resistant Salmonella typhi: why should African countries move quickly toward adopting typhoid conjugate vaccine** [version 1; peer review: awaiting peer review]. *F1000Research* 2023, 12:963 (<https://doi.org/10.12688/f1000research.137428.1>)

18. Lubanga AF, Bwanali AN, Munthali L, Mphepo M, Chumbi GD, Kangoma M, Khuluza C. **Malawi vaccination drive: An integrated immunization campaign against typhoid, measles, rubella, and polio; health benefits and potential challenges**. *Hum Vaccin Immunother.* 2023 Aug 1;19(2):2233397. doi: 10.1080/21645515.2023.2233397. PMID: 37431661; PMCID: PMC10337493.

19. Focus Adriano, Lubanga a, b; Nazir, Abubakar a, c, Uwishema, Olivier. a, d, e. **The devastating effect of cyclone Freddy amidst the deadliest cholera outbreak in Malawi: a double burden for an already weak healthcare system- short communication**. *Annals of Medicine & Surgery* ():10.1097/MS9.0000000000000961, June 19, 2023. | DOI: 10.1097/MS9.0000000000000961

20. Lubanga, A., Lipenga, A., Mwapasa, V., Kanyinji, G., Ndlovu, D., Sichinga, T., Mwenye Phiri, G., Ng'oma, L., Mwenyekonde, E., Jeon, D., Han, S., Choe, K., Seung, J., Kong, J., & Nyirenda, T. (2023). **The Clinical and Social Economic Profile of Patients Diagnosed with COVID-19 at Likuni Mission Hospital, Malawi**. *Medical Research Archives*, 11(5). Doi: <https://doi.org/10.18103/mra.v11i5.3696>

21. Nyirenda, T., Moon, S., Jang, S., Choe, J., Yu, S., Chung, D., Kang, R., Mwenye-Phiri, G., Ng'oma, L., Mwenyekonde, E., & Lubanga, A. (2023). **Call for Integration of Screening of Other Respiratory Diseases of Epidemic Potential in TB Traditional Clinics**. *Medical Research Archives*, 11(5). <https://doi.org/10.18103/mra.v11i5.3695>

22. Shariff, Sanobara; Emir Chehab, Tareka; Kassem, Hadya; Lubanga, Adriano; Uwishema, Olivier; Nazir, Abubakar MBBS, **Outbreak of measles: threatening India's goal to achieve elimination**. *International Journal of Surgery: Global Health* 6(4): e0156, July 2023. | DOI: 10.1097/GH9.0000000000000156

23. Uwishema O, Adriano LF, Torbati T, Onyeaka H. **Measles crisis in Africa amidst the COVID-19 pandemic: Delayed measles vaccine administration may cause a measles outbreak in Africa**. *J Med Virol.* 2021 Oct;93(10):5697-5699. doi:10.1002/jmv.27150. Epub 2021 Jun 28. PMID: 34181289.

14. Other Outputs since 2012

1. In 2012, CREAMS published the first bibliographic database of all published health research conducted in Malawi since 1964 on its website, which is open for access by the general public and this resource is updatable
2. In 2012, CREAMS coordinated the launch of research nurses training scheme that has been developed by Global Health Trials group (www.globalhealthtrials.tghn.org)
3. In 2013, CREAMS received a grant from the International Network for Availability of Scientific Publications (INASP) to start the process of building capacity for Systematic Reviews within the Research Directorate of Ministry of Health of Malawi. This project resulted in two workshops with members of the Directorate and some members of the Knowledge Translation Platform.
5. In 2013, CREAMS launched its first short introductory courses in Basic Epidemiology, Study Design and Methods, Statistical Concepts for Clinical Research, Clinical Trial Management, Clinical Data Management, Clinical Trial Monitoring and Project Monitoring and Evaluation. Staff from health research unit of MoH, Mzuzu Hospital, Kasungu Hospital and Malawi College of Health Sciences received Good Clinical Practice training in 2013.
6. In 2014, CREAMS supported the new ENT unit at College of Medicine (CoM) in Blantyre in training and research preparedness. The results are published: (*Mulwafu W, Nyirenda T, Fagan JJ, Bem C, Mlumbe K, Chitule. Initiating and developing clinical services, training and research in a low resource setting: the Malawi ENT experience. Tropical Doctor 2014, Vol. 44(3) 135–139*)
7. In 2015 (January), CREAMS developed a research and collaborators database for the COM's Wellcome Trust funded SACORE Project (<http://sacoreresearch.org/about/>)
8. In 2016–17, CREAMS teamed up with African Institute of Biomedical Science and Technology – AiBST (Zimbabwe) and Vlakkraal (Germany) to introduce international standard DNA testing for medical and legal services in Malawi. AiBST focuses on Molecular Diagnostics, Pharmacogenetics, Drug Metabolism & Pharmacokinetics and Forensic Science, and postgraduate training in these areas with linkage to University of Zimbabwe. The company's technology platforms are HPLC, LC-MSMS, PCR, RT-PCR, DNA Sequencers. It also set up a biobank of DNA samples from across Africa including a Phase I Clinical Trial Unit in Harare. Vlakkraal GmbH, registered in Germany specializes in Protocol development for workflow, Sampling/storage/shipping design, Quality control, Training module set up. The partnership which works closely with Pharmacogenetics department of College of Medicine in Malawi has trained selected nurses from Mzuzu Central Hospital, Kasungu Hospital, Lilongwe Private Clinic and Mlambe hospital.

9. Since 2017, CREAMS has been involved in hosting summer pre-medical school attachments programme for USA based science students who are taken through experience with low-income country tropical health care before they go back to the USA to apply for medical training. This is done in collaboration between CREAMS and Stem Research Institute, Fairfax, USA. Throughout the years of our collaboration and with our local teams, we have published about 15 papers thus far.
10. From 2019, CREAMS has partnered with e-Health Africa (<https://e-health.africa/>), which is a South Africa company, to bring electronic Occupational Health Services to Malawi
11. From 2018, CREAMS has coordinated support of underprivileged undergraduate students at Kamuzu School of Health Sciences (previously CoM) with tuition fees. Ten students have been supported with funds from well-wishers in USA.
12. In 2023, CREAMS in partnership with LT Clinical Research Ltd from South Africa and trained 15 hospital personnel from KCH, Deayang Hospital, Likuni Hospital and St Gabriel Hospital in Good Clinical Practice.
13. From 2023, CREAMS team has embarked on several research activities. This has led to many publications including current papers under review

